

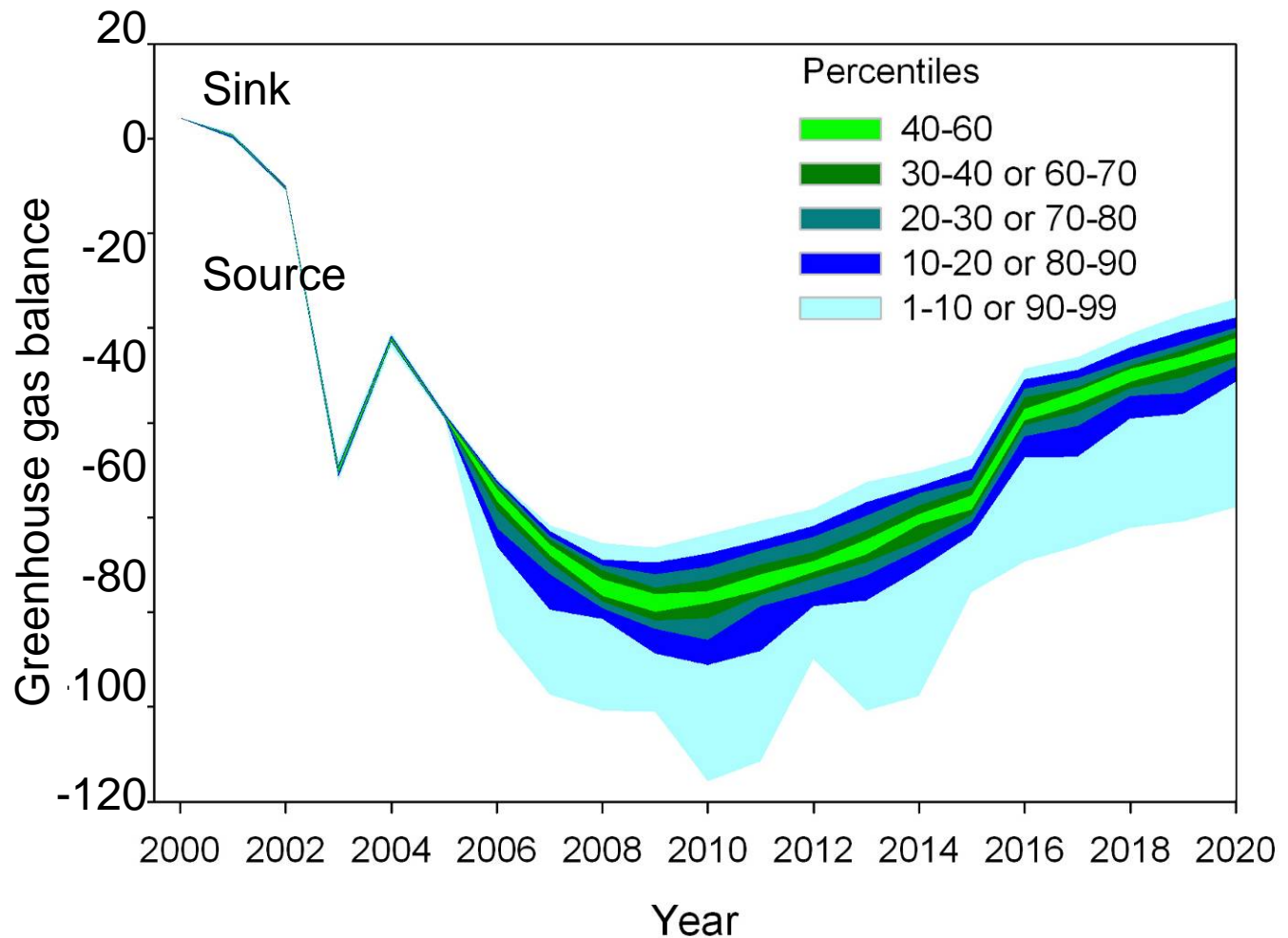
Energy from Beetle-killed Wood?

Caren Dymond

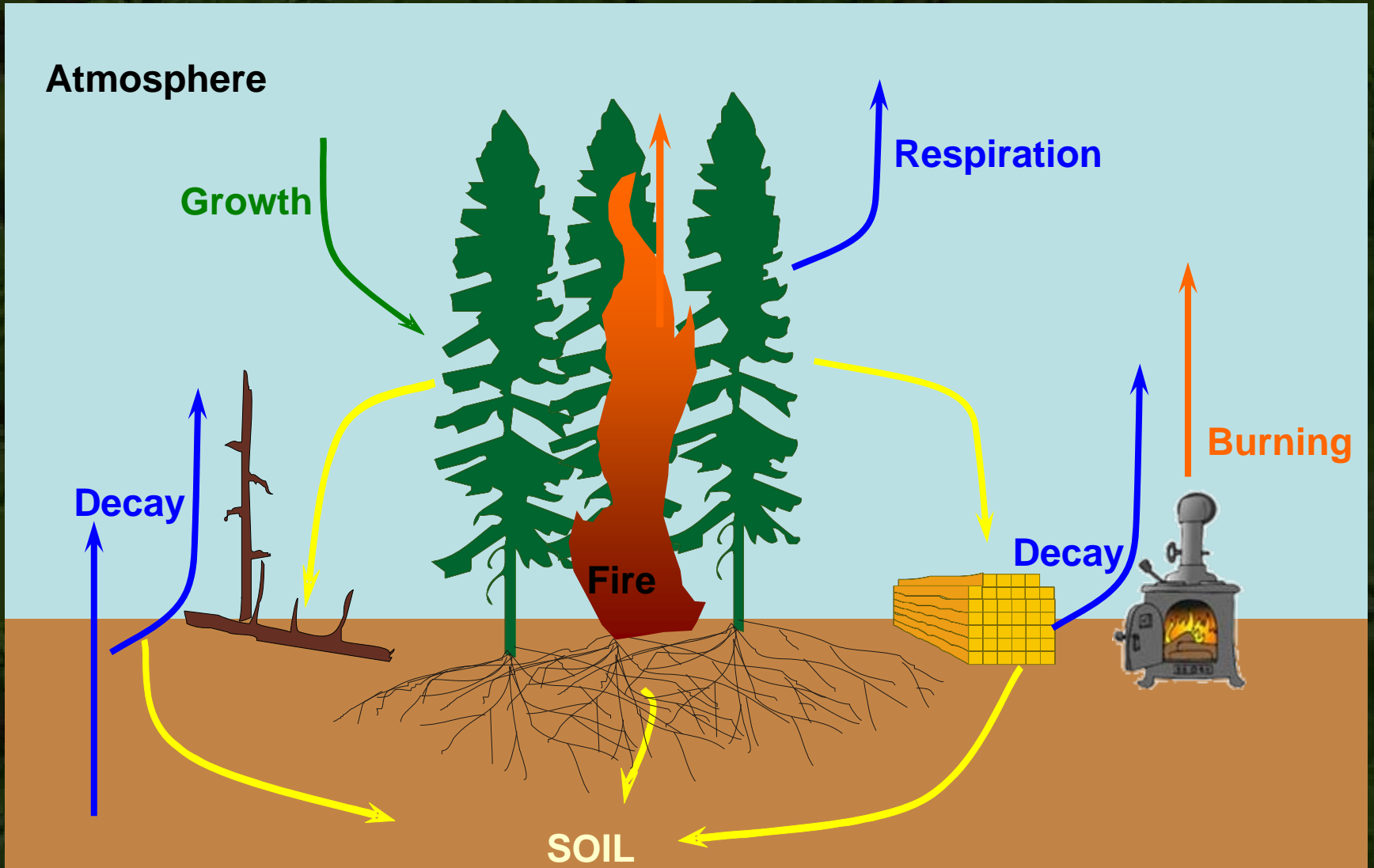
July 15, 2008

BC Sustainable Energy Association meeting

Forests are always sucking up CO₂, right?



Forest Carbon flows



Yol Amigoll
We need that tree
to protect us from
the Greenhouse Effect!



BC Gov't Bioenergy Strategy

Biomass Resources

- Beetle-killed timber
- Sustainable forestry
- Sustainable agriculture
- Waste

- Emphasis on Wood waste
- But recognize that supply is unknown

- *In 2007, B.C. produced over 900,000 tonnes of wood pellets; 90 per cent was exported for power production overseas.*

Is wood-based bioenergy a good idea?

- You can't eat wood
- Moving carbon around the earth, not adding to the biosphere from fossilized sources.
- Short-term substitute for fossil fuels while we bridge to new production and technologies.
- Some of the beetle-killed timber is in forests that were going to be harvested anyways.
- The forest animals, insects and plants need some of that biomass to live.
- Bioenergy is considered "clean" if
 - the trees are already dead
 - there is a comparable level of growth on the landscape
 - Substitute for fossil fuels.
- It takes fossil fuels to move wood around.
- The energy density of wood is low.

Things BC SEA might want to consider

- Can a salvage harvesting program be implemented that only takes dead wood?
- How do we ensure any bioenergy production is a substitute for fossil fuels in the long run?
- At what scale is bioenergy best suited?
- What have other jurisdictions learned about biomass legislation and regulation?
- Join the Bioenergy Network?
 - <http://www.bcbioenergy.ca/>

